

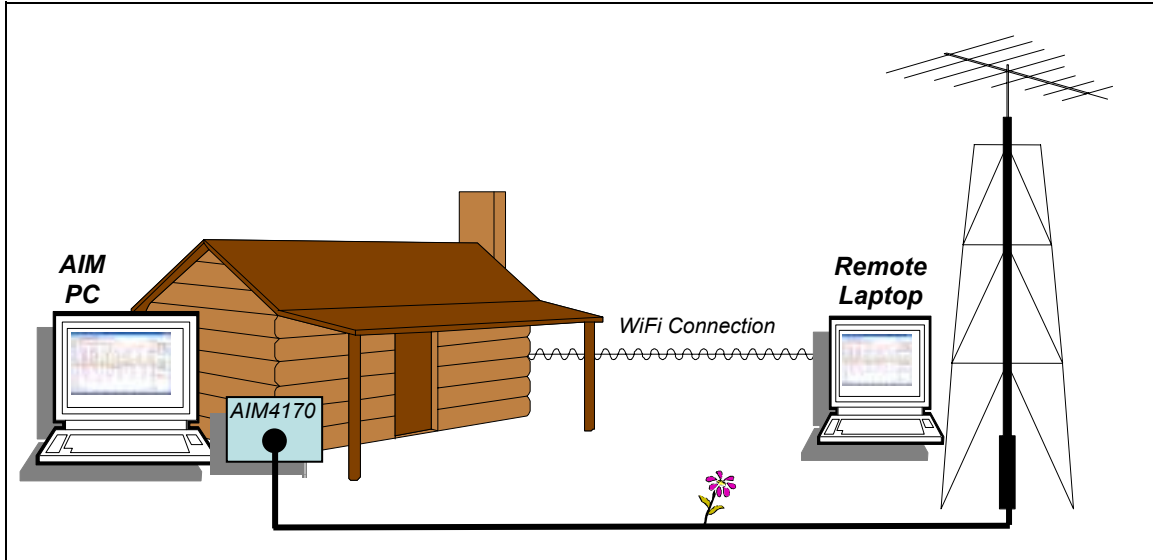
REMOTE AIM CONTROL HOWTO

by Ian Wade (G3NRW) <g3nrw@yahoo.co.uk>

6 January 2009

SCENARIO

This application note explains how to set up remote access to a PC that controls the AIM4170 antenna analyzer. Having remote access means that you can control the analyzer from a laptop that is anywhere within WiFi range. The setup looks something like this:



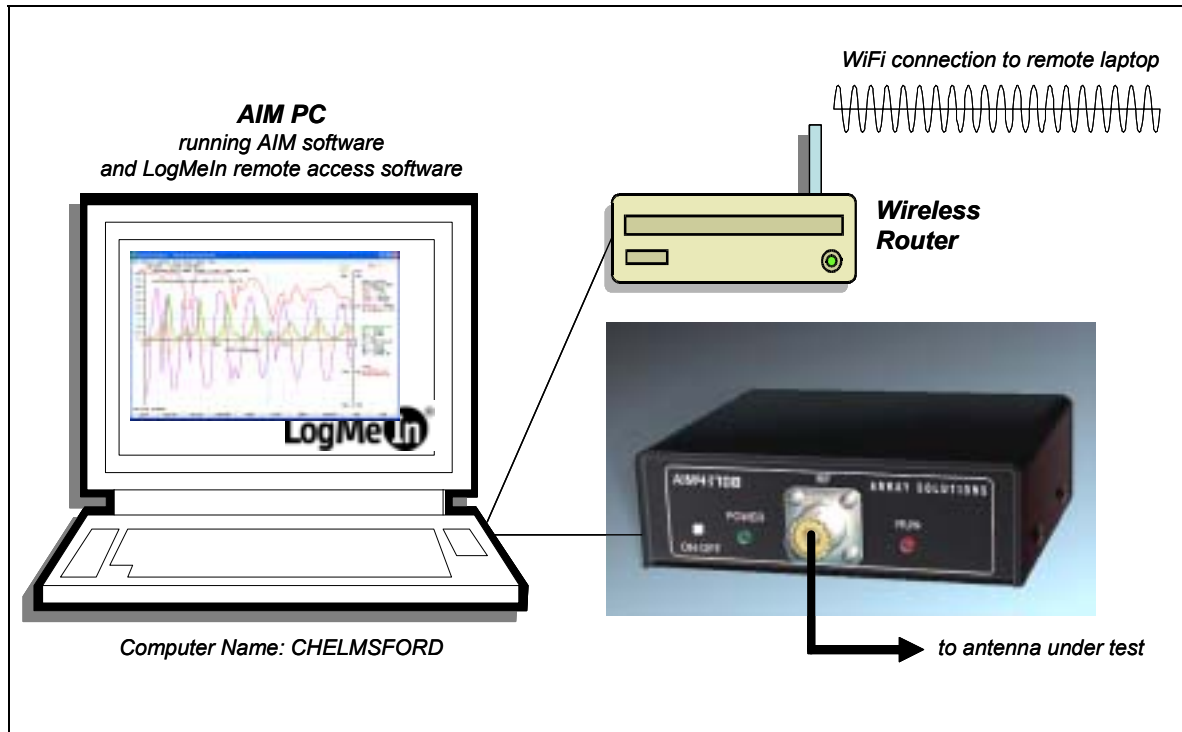
The PC that controls the analyzer (the “AIM PC”) runs the usual AIM software, and also runs a remote access server software package. The AIM PC is connected to a local WiFi router. The “Remote Laptop” runs a Java-enabled browser that acts as a remote access client, communicating via the WiFi link to the server.

The benefits of such a setup are several:

- The AIM PC and AIM4170 can remain indoors in a favorable clean environment.
- Everything that appears on the AIM PC screen is reproduced exactly on the laptop screen.
- The effects of changes to the antenna, transmission line etc. are viewable on the laptop immediately. It is not necessary to go back indoors to look at the AIM display after making each change.
- All keyboard and mouse entries at the laptop are communicated to the AIM PC, allowing full remote control of the AIM software.
- The remote access server software is freely available and easy to install on the AIM PC.
- No special software is required on the laptop. Any laptop that has a Java-enabled browser will work. Further, the laptop can run under any operating system – Windows XP, Windows Vista and Linux are all suitable.

SERVER HARDWARE SETUP

The server hardware setup is as follows:



- The AIM PC is connected via a serial link to the AIM4170 analyzer, which in turn is connected to the antenna under test.
- The PC is also connected to a wireless router, either by LAN cable or by wireless.
- In the description that follows, the Computer Name is set to “CHELMSFORD”.

Once the hardware is connected, verify that the AIM4170 and the connection to the router are working as expected.

SERVER SOFTWARE SETUP

There are many software packages available that will function as a remote access server. For this application note, a package from LogMeIn Inc is described (<http://www.logmein.com>). This has been found to operate reliably, and is free.

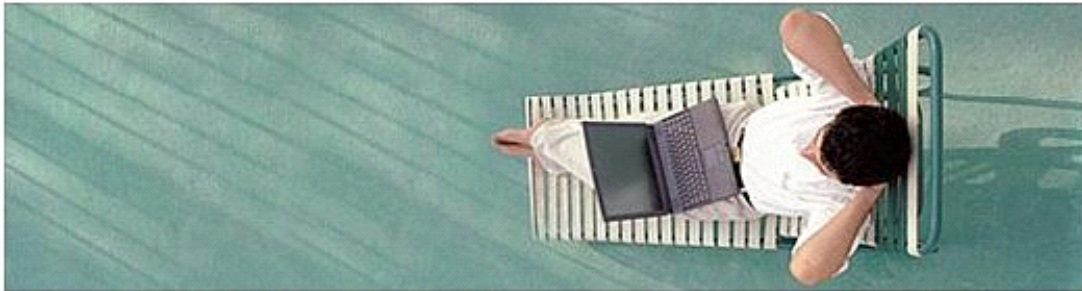
There are essentially four steps involved in installing the LogMeIn remote access software on the AIM PC:

- Step 1: Create a LogMeIn account.
- Step 2: Login to the LogMeIn account.
- Step 3: Download and install the remote access software.
- Step 4: Set up the third-party firewall (if applicable).

Step 1: Create a LogMeIn Account

1. On the AIM PC, go to https://secure.logmein.com/welcome/get_logmein_free/signup.asp. The account creation screen appears, as below.
2. Fill out the form as directed, and click on **Go**. Your LogMeIn account will be created.

Access & Control a PC or Mac from Anywhere



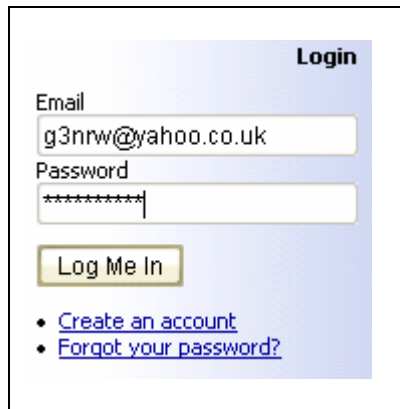
Get it FREE — set up takes 2 minutes or less

An activation link will be emailed to the address you provide.
Please make sure you use a valid email address.

Enter email	<input type="text" value="g3nrw@yahoo.co.uk"/>
Re-enter email	<input type="text" value="g3nrw@yahoo.co.uk"/>
Enter password	<input type="password" value="●●●●●●●●"/>
Re-enter password	<input type="password" value="●●●●●●●●"/>
Country	<input type="text" value="United Kingdom"/>
I plan to use LogMeIn	<input type="text" value="Personal use"/>

Step 2: Login to the LogMeIn Account

1. Go to <http://logmein.com>. Enter your email address and LogMeIn password at the top right-hand corner of the screen:



Login

Email
g3nrw@yahoo.co.uk

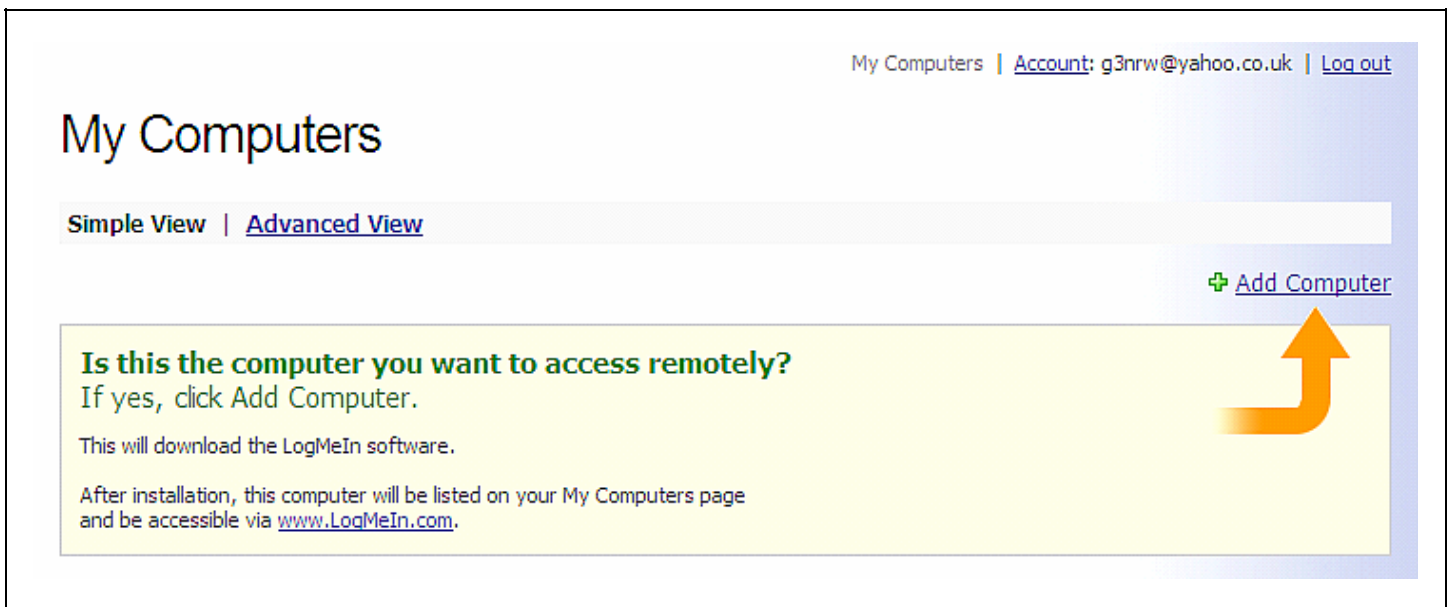
Password

[Log Me In](#)

- [Create an account](#)
- [Forgot your password?](#)

Step 3: Download and Install the LogMeIn Software

1. After logging in, the **My Computers** window appears.
2. Click on **Add Computer** at the right-hand side.



My Computers | [Account: g3nrw@yahoo.co.uk](#) | [Log out](#)

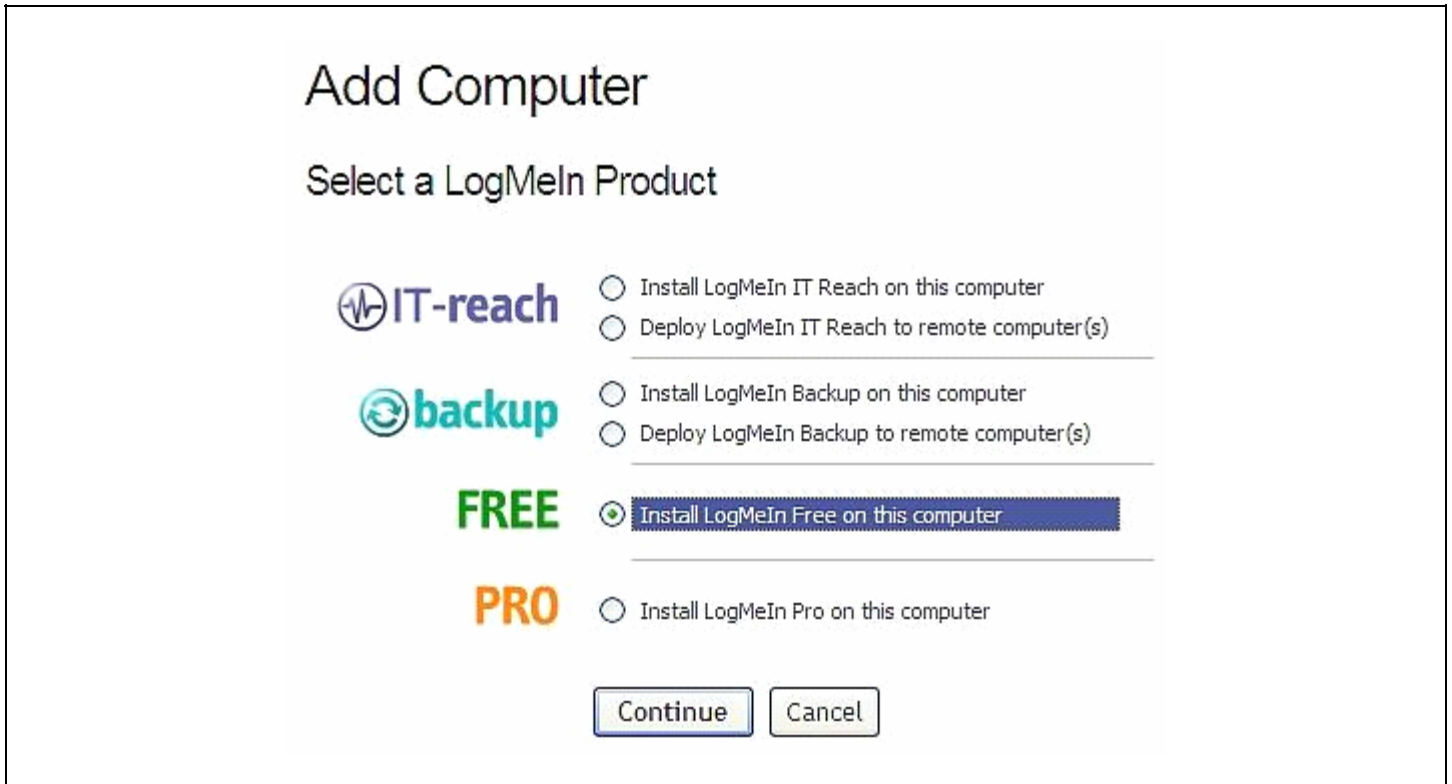
My Computers

[Simple View](#) | [Advanced View](#)

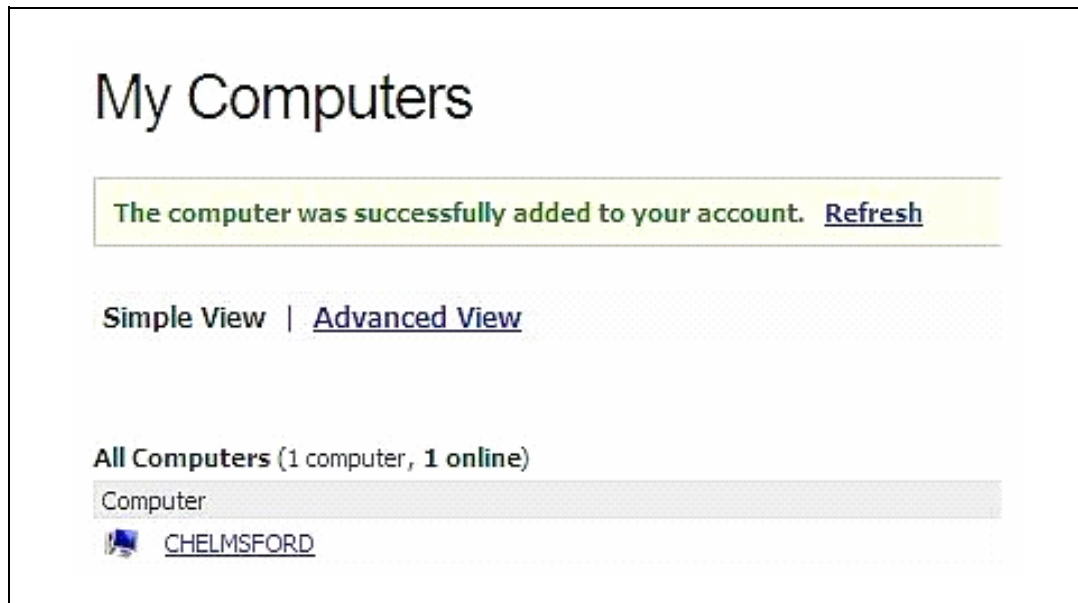
[+ Add Computer](#)

Is this the computer you want to access remotely?
If yes, click Add Computer.
This will download the LogMeIn software.
After installation, this computer will be listed on your My Computers page and be accessible via www.LogMeIn.com.

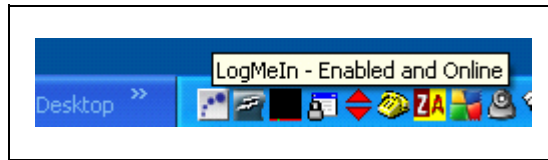
3. The **Add Computer** window appears.



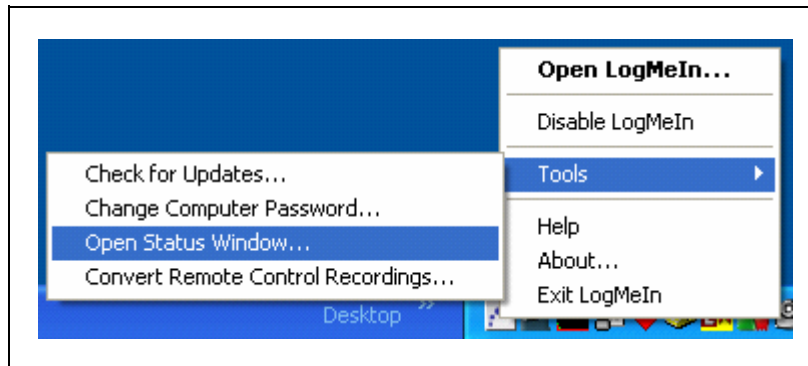
4. Select the **FREE** option, then click on **Continue** to initiate the software download.
5. Follow the Wizard instructions to install the software.
6. When the install process is complete, a new **My Computers** window appears. It should show your AIM PC Computer Name.



- At this point, the LogMeIn icon (a gray square containing four blue dots in an arc) should be displayed in the Windows taskbar. Hover the cursor over the icon. The **LogMeIn - Enabled and Online** hint should appear:



- To verify the LogMeIn server status, right-click on the LogMeIn icon, and select **Tools > Open Status Window...**

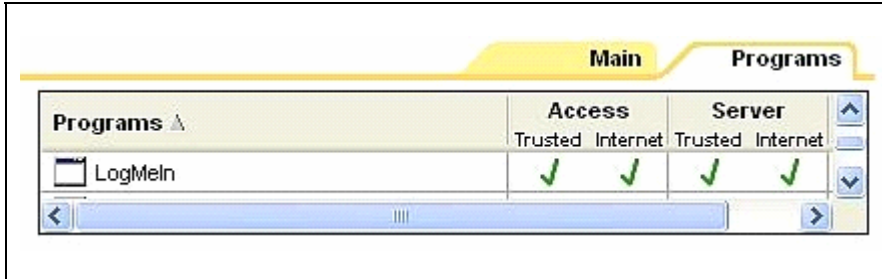


- The status window will then appear. Check that the server is logged in to the LogMeIn web gateway:



Step 4: Set up the Third-Party Firewall (if applicable)

If the AIM PC only has the Windows firewall in operation, it is not necessary to do anything special to allow the LogMeIn remote access server to work. But if the PC is also running a third-party firewall, you will need to enable outbound server access. For example, with ZoneAlarm, set the Program Control as follows:



The setup of the AIM PC is now complete.

A (MINOR) GOTCHA

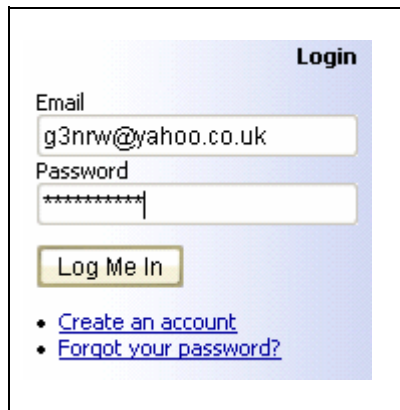
There is a time limit on the LogMeIn software. When the limit is reached, you will be invited to pay for the package, or you may continue to use it free of charge for remote control purposes only. Select the "Remote Control Only" option, and you should not be troubled again.

REMOTE LAPTOP OPERATION

As mentioned earlier, there is no need to install any remote access software on the Remote Laptop. All that is needed is a Java-enabled browser.

To make the remote access connection to the AIM PC:

1. Start the browser on the laptop, and go to <http://logmein.com>.
2. Enter your email address and LogMeIn password at the top right-hand corner of the screen:



The screenshot shows the LogMeIn login interface. It features a blue header with the word "Login" in white. Below the header, there are two input fields: "Email" containing "g3nrw@yahoo.co.uk" and "Password" containing "*****". A yellow "Log Me In" button is positioned below the password field. At the bottom, there are two blue links: "Create an account" and "Forgot your password?".

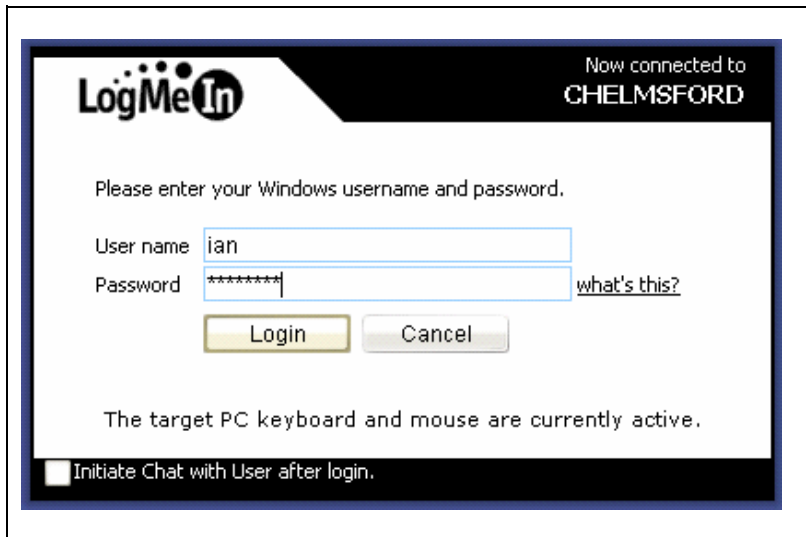
3. The **My Computers** window appears:



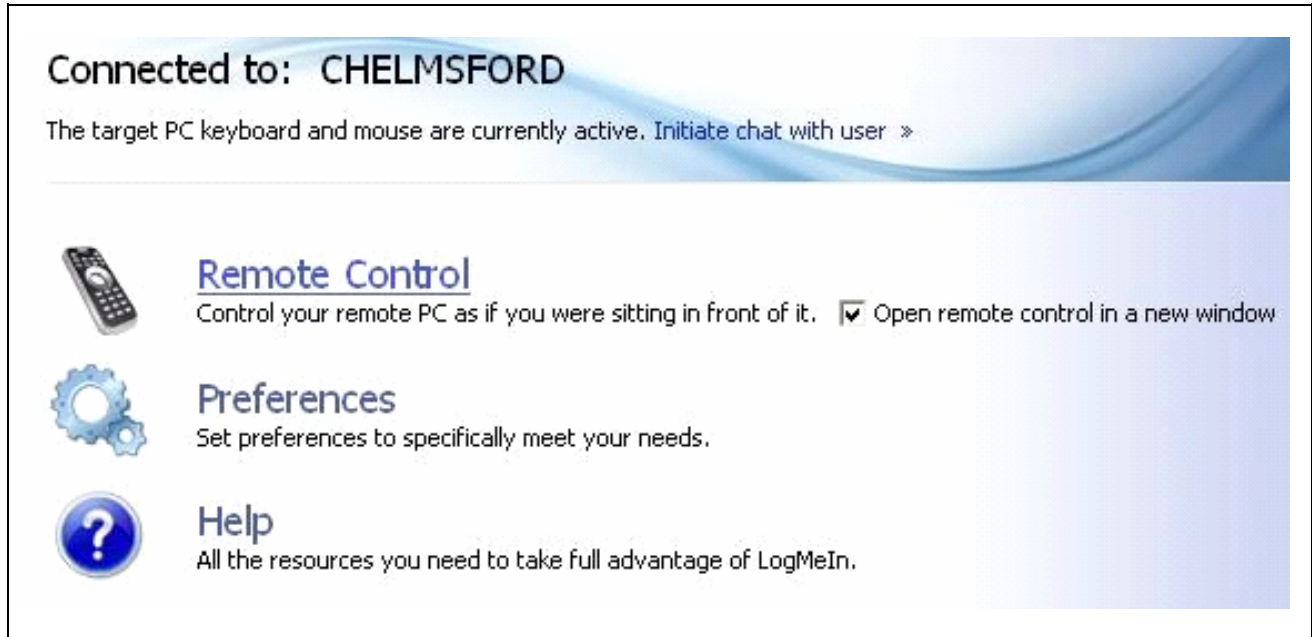
- Click on the Computer Name (**CHELMSFORD** in this example). A **Connecting** screen will appear:



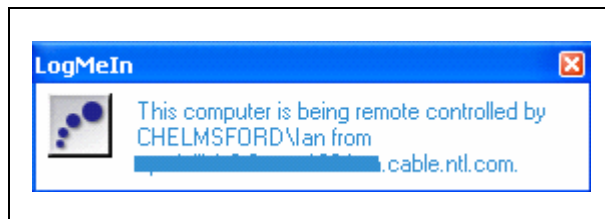
- A Windows login screen now appears, showing that the laptop is connected to the AIM PC. Enter your AIM PC Windows user name and Windows password:



6. A **Connected** window now appears. Click on the **Open remote control in a new window** checkbox, then click on **Remote Control**:



7. A new window should now open. Click on **Full Screen**. The remote windows laptop screen should now look exactly the same as the AIM PC screen. As a warning that the AIM PC is being remotely controlled, a pop-up appears in the top right-hand corner:



Everything is now set up for remote AIM control. Everything you type on the laptop keyboard should be echoed on the AIM PC screen. Every move of the mouse cursor and every mouse click on the laptop should be faithfully reproduced on the AIM PC. Every object on the AIM PC screen should look exactly the same as on the laptop screen.

ACKNOWLEDGEMENTS

Windows is a registered trademark of Microsoft Corporation in the United States and other countries.

LogMeIn is a registered trademark of LogMeIn, Inc.

ZoneAlarm is a registered trademark of Check Point Software Technologies, Inc.

The trademarks are the property of their respective owners.